

7/4/12

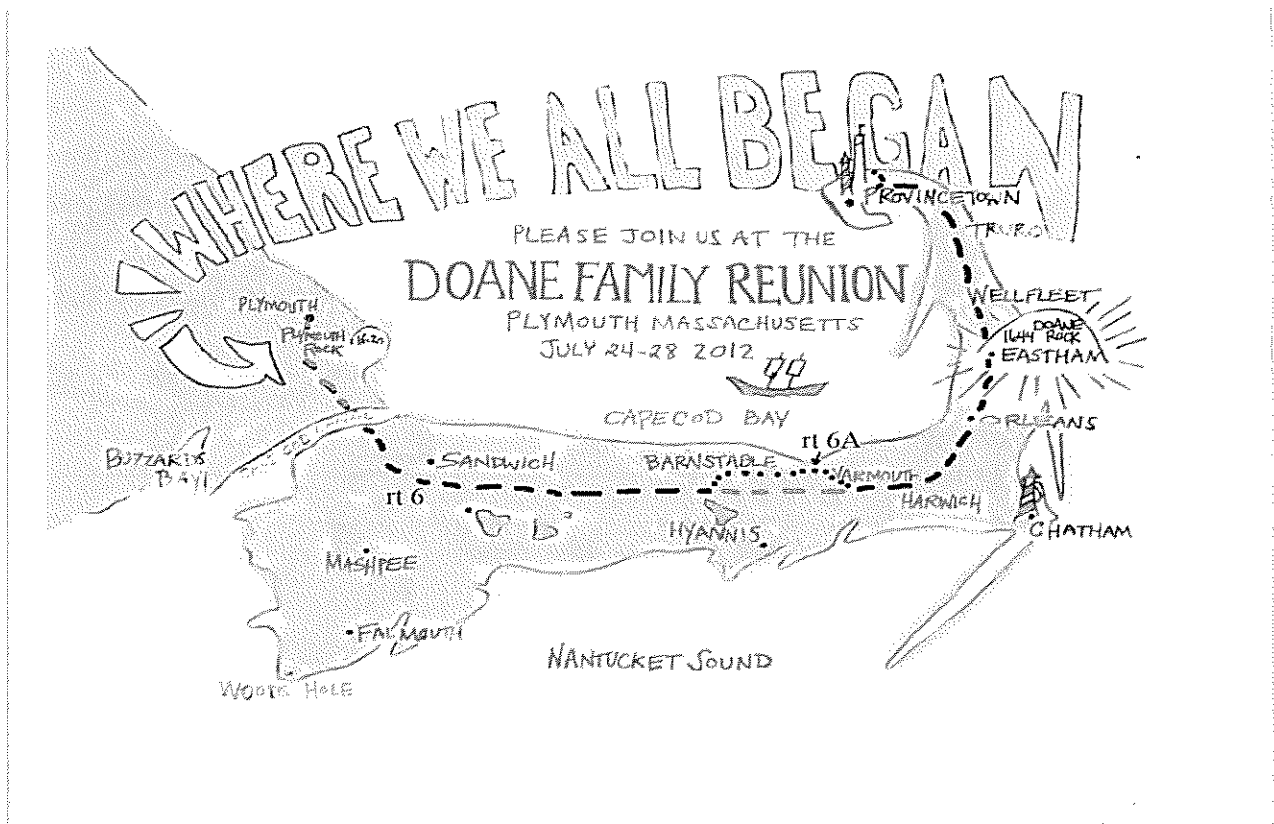
“Ladies and Gentlemen, If we accomplish all that we have planned for the day, our time will be closely occupied.”

Mr. Alfred Alder Doane on the occasion of the Deacon John Doane Memorial Exercises, Wednesday, August 21, 1907.

Schedule for All Day Trip to Cape Cod - Thursday, July 26th, 2012

8am-10am Drive to Province Lands Visitor Center:

Route 6 across the Cape Cod Canal via the Sagamore Bridge.



The canal, as you see it now, is about 17 miles long. It connects Buzzards Bay to the west with Cape Bay to the east. It was built to avoid the long route that ships had to use previously to get from New York to Boston - which was around the entire outer shore of the Cape. This is a long and notoriously dangerous journey because of the shifting shoals on which many ships ran aground. We will hear much more about this at the Province Lands Visitor Center.

7/4/12

Although the idea of such a canal had circulated in the Plymouth Colony in the early 1600's, it did not come to fruition until about 1914 when a privately owned canal was completed. This shortened the route from NY to Boston by about 62 miles. In 1918 a German U-Boat surfaced three miles off Orleans, on the outer shore of the Cape, and shelled a tug and 4 barges. Following that, the government purchased the canal, re-dredged and widened it, as you see today.

Leave route 6 at exit 6 in Barnstable and follow route 6A to exit 8 in Yarmouth Port. About 9 miles.

Step back in time

This is the Old King's Highway, and probably before that, a Native American pathway from Plymouth to Provincetown.

Look for:

Many houses dating from the 1700's

In the 18th century maritime activities flourished and ship-captain's homes, taverns and other commerce developed along the route. Many trees were cut down to build houses and ships. In the 19th the maritime industries were in decline and the cranberry production increased. In addition new trees were planted, many of these now grace the road today.

Look for:

Cape Cod Community College mile .2

Old cemetery (mile 2.3)

Cape Cod Houses:

Whole House

$\frac{3}{4}$ House

$\frac{1}{2}$ house

Some now have additions, dormers, attached garages, but you can still see how they began.

Parnassus Book Store:

220 route 6A Yarmouth Port

Built as a general store in the early 1800's, it is now a general book store selling new and old (often rare) books as well as issuing specialty catalogs on a variety of subjects: Americana, Latin America, Maritime, Art, the Orient and a variety of other subjects.

Blue Hydrangeas,

White Oyster shell driveways,

Boxwood hedges,

7/4/12

**Antique shops,
Art galleries,
White steepled churches,**

And One Center Street Inn in Yarmouth Port – Elisha Doane House

From Todd Doane:

The home's original owner was Elisha Doane, known as Squire Doane. He owned shares in numerous sailing vessels and operated the Doane Tavern, which was just a few doors down the road.

Today it is a B&B along Olde Kings Highway, which boasts some of the most magnificent Cape homes.

After passing the Elisha Doane House, we turn on Union Street and back to route 6. Notice the houses on Union Street are much more modern than those on route 6A.

Route 6, known as mid-cape highway, was built in 1947. It opened up the interior of the Cape to new development, which has continued since then. We travel the highway, lined with pitch pines, at 55 mph to the rotary in Orleans. There it becomes a main street of Eastham, Wellfleet, Truro and Provincetown. It carries over 100,000 cars per day in the summer.

Soon after the Orleans rotary we will be in Eastham.

Once there, look for the Cove Cemetery on the right, which we will visit later today. After that, the Abelimo Doane house (Greek Revival style) on the right, near Governor Prentice Road. Glimpse Nauset Marsh in the distance beyond.

The original families who settled in Nauset with Deacon John have left their names in many places. Look for businesses, buildings, and street names of Bangs, Cook, Snow, Higgins, Smalley, Prentice, and of course, Doane. Also you will see the names of the Native Americans who were here before us: Nauset, Samoset, Massasoit.

We continue through Wellfleet and Truro toward Provincetown.

In Provincetown we will pass Pilgrim Lake and the sand dunes and turn right on Race Point Road. We will drive through beech and oak forest to our first stop, the Province Lands Visitor Center.*

*About the name Province Lands :In 1692, a new Royal Charter combined the Plymouth and Massachusetts Bay colonies into the Province of Massachusetts Bay. "Cape Cod", so named by the explorer Bartholomew Gosnold in 1602, was thus officially renamed the "Province Lands".

7/4/12

10:00 am – 10:45 am

Province Lands Visitor Center, Cape Cod National Seashore

In the auditorium, Mr. Richard Ryder, our host and guide, will tell us the dramatic story of shipwrecks and the role of the Life Saving Service in rescues and prevention. Two keepers of the Life Saving Station were named Hezekiah Doane. We'll learn more about them today.

Following the program you will have a short time to climb up to the observation deck, visit the gift shop, exhibits, and rest rooms.

11:00-11:15 Busses B and C drive to Old Harbor Life Saving Station

11:15-11:30 Bus A drives to Old Harbor Life Saving Station

Then we continue to Race Point Beach and tour the newly restored Old Harbor Life-Saving Station.

12 – 12:30 Drive back to Eastham for lunch

Lunch will be served at the Elks Lodge off route 6 in Eastham. Please have your meals tickets with you so that you get the lunch that you ordered.

1:30 Busses B and C depart for Cemetery Tour,

Bus A departs for Deacon John Doane home site and Doane Rock.

Following lunch we will split into two groups: Bus A will visit the Deacon John Doane home site and then go to Cove Burying Ground and Bridge Road Cemetery. Busses B and C will go first to Bridge cemetery, then Cove Burying Ground, and then to the Deacon John Doane home site.

Following the visit to the Doane home site we will stop briefly at the Salt Pond Visitor Center where you can see exhibits. There are rest rooms.

3:30- 4 Drive to Orleans Historical Society

3:30-4:30 Reception at Orleans Historical Society

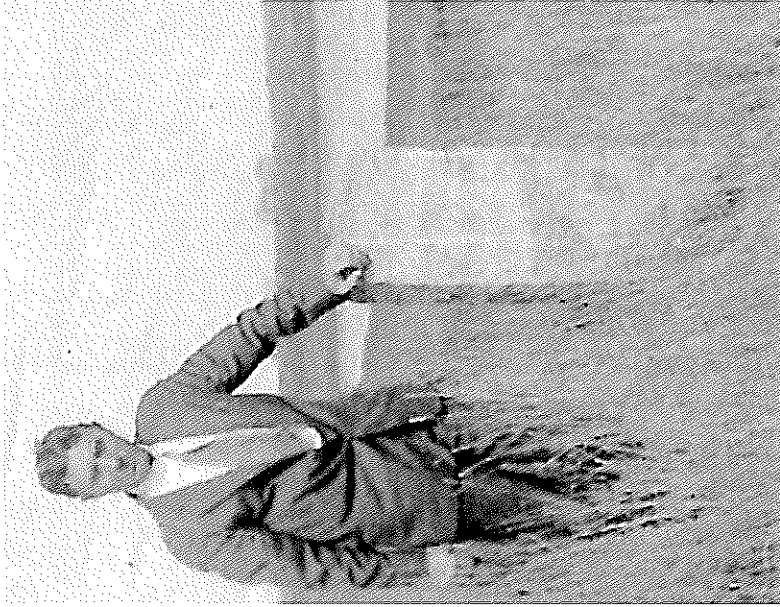
We will all gather together at the Orleans Historical Society in Orleans for refreshments and to see the exhibits. You may also want to visit the grave of Thomas Doane, the founder of Doane college. This is in walking distance of the Historical Society.

4:30-6:00 Drive back to Plymouth

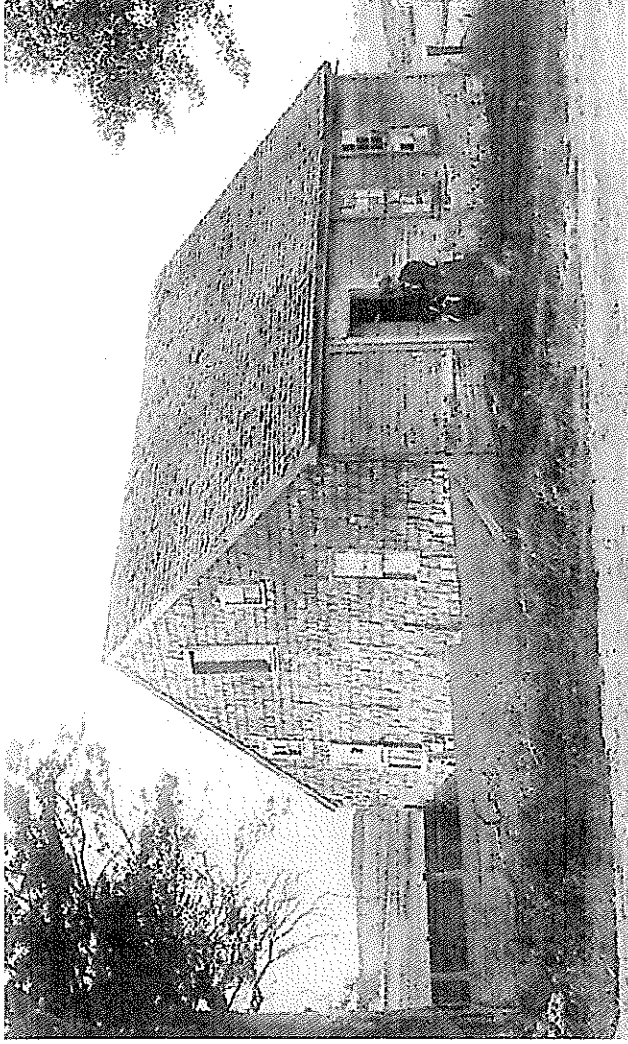
6:00-7:00 Dinner at the John Carver Inn

7:00 Patricia Wells will give a presentation about Thomas Doane

7/4/12



Charles N. Doane Sr. at the Deacon
John homesite, circa 1930



The original home of Gov. Thomas Prence, One of Eastham's first settlers. Prence served three terms as governor of the Plymouth Colony. He served two terms while still living in Plymouth and served his third term after moving to Eastham in 1644. By the early 1900s, this building was being used for the penning of pigs.

*From Images of America, Eastham, by Marilyn C. Schofield
and Roberta Cornish for the Eastham Historical Society*